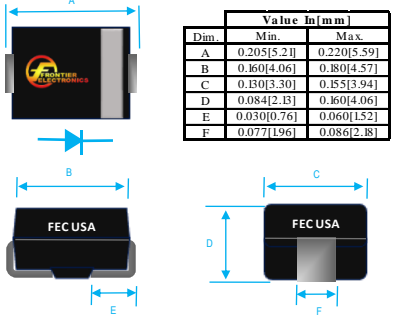


2A ULTRA FAST RECOVERY SURFACE MOUNT RECTIFIER

 <table border="1" style="margin-left: auto; margin-right: auto;"> <thead> <tr> <th rowspan="2">Dim</th> <th colspan="2">Value in (mm)</th> </tr> <tr> <th>Min</th> <th>Max</th> </tr> </thead> <tbody> <tr> <td>A</td> <td>0.205[5.21]</td> <td>0.220[5.59]</td> </tr> <tr> <td>B</td> <td>0.160[4.06]</td> <td>0.180[4.57]</td> </tr> <tr> <td>C</td> <td>0.130[3.30]</td> <td>0.153[3.94]</td> </tr> <tr> <td>D</td> <td>0.084[2.13]</td> <td>0.160[4.06]</td> </tr> <tr> <td>E</td> <td>0.030[0.76]</td> <td>0.060[1.52]</td> </tr> <tr> <td>F</td> <td>0.077[1.96]</td> <td>0.086[2.18]</td> </tr> </tbody> </table>	Dim	Value in (mm)		Min	Max	A	0.205[5.21]	0.220[5.59]	B	0.160[4.06]	0.180[4.57]	C	0.130[3.30]	0.153[3.94]	D	0.084[2.13]	0.160[4.06]	E	0.030[0.76]	0.060[1.52]	F	0.077[1.96]	0.086[2.18]	<h3>PRODUCT FEATURES</h3> <ol style="list-style-type: none"> 1. FLAMMABILITY CLASSIFICATION: 94V-0 2. GLASS PASSIVATED CHIP JUNCTION 3. BUILT-IN STRAIN RELIEF 4. LOW PROFILE 5. ULTRA FAST SWITCHING 6. CASE: MOLDED PLASTIC, DO-214AC (SMA-F) 7. POLARITY: INDICATED BY CATHODE BAND 8. WEIGHT : 0.093 GRAMS 9. TERMINALS : PER MIL-STD-750 METHOD 2026 10. ROHS
Dim		Value in (mm)																						
	Min	Max																						
A	0.205[5.21]	0.220[5.59]																						
B	0.160[4.06]	0.180[4.57]																						
C	0.130[3.30]	0.153[3.94]																						
D	0.084[2.13]	0.160[4.06]																						
E	0.030[0.76]	0.060[1.52]																						
F	0.077[1.96]	0.086[2.18]																						

MAXIMUM RATINGS AND ELECTRICAL CHARACTERISTICS RATINGS AT 25°C AMBIENT TEMPERATURE UNLESS OTHERWISE SPECIFIED STORAGE AND OPERATING TEMPERATURE RANGE -55°C TO + 150°C. SINGLE PHASE, HALF WAVE, 60 HZ, RESISTIVE OR INDUCTIVE LOAD. FOR CAPACITIVE LOAD, DERATE CURRENT BY 20%

RATINGS	SYMBOL	VALUE	UNITS
MAXIMUM AVERAGE FORWARD RECTIFIED CURRENT @ 90°C	IO	2	A
PEAK FWD SURGE CURRENT, 8.3ms HALF SINE-WAVE SUPERIMPOSED ON RATED LOAD	IFSM	50	A
TYPICAL JUNCTION CAPACITANCE(NOTE 1)	CJ	28	pF
TYPICAL THERMAL RESISTANCE (NOTE 2)	Rqja	20	°C/W
MAXIMUM REVERSE CURRENT @ 25°C	IR	10	uA
MAXIMUM REVERSE CURRENT @ 100 °C	IR	200	uA

1. Cj MEASURED @ 1 MHZ AND APPLIED REVERSE VOLTAGE OF 4.0 VOLTS

2. THERMAL RESISTANCE FROM JUNCTION TO AMBIENT AND JUNCTION TO LEAD PCB MOUNTED ON 0.3×0.3"(8.0×8.0mm) COPPER PAD AREAS

3. REVERSE RECOVERY TEST CONDITIONS: IF=0.5A, IR=1.0A, IRR=0.25A

4. MAXIMUM FORWARD VOLTAGE @ Io DC

PART NUMBER	MAX RECURRENT PK REV VOLTAGE VRRM (V)	MAX RMS VOLTAGE VRMS (V)	MAX DC BLOCKING VOLTAGE VDC (V)	MAX FWD VOLTAGE VF (V)	MAX REVERSE RECOVERY TIME nS
US2A	50	35	50	1	50
US2B	100	70	100	1	50
US2D	200	140	200	1	50
US2G	400	280	400	1.3	50
US2J	600	420	600	1.7	75
US2K	800	560	800	1.7	75
US2M	1000	700	1000	1.7	75

RATING AND CHARACTERISTIC CURVES

FIG. 1-TEST CIRCUIT DIAGRAM AND REVERSE RECOVERY TIME CHARACTERISTIC

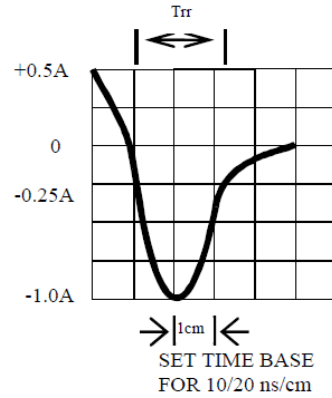
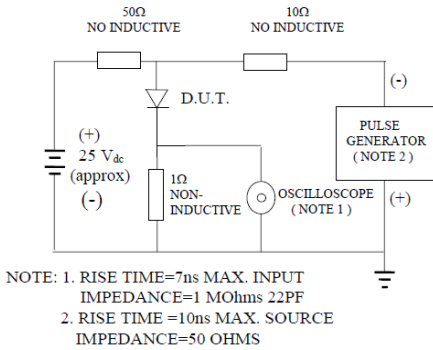


FIG. 2-TYPICAL FORWARD CURRENT DERATING CURVE

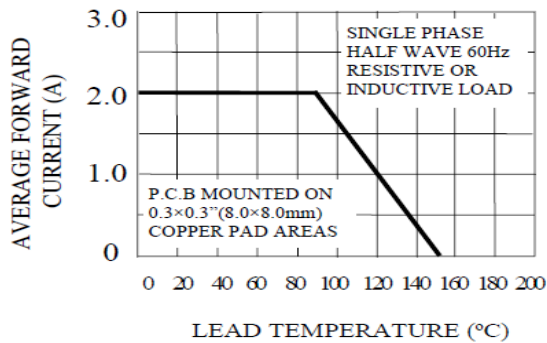


FIG. 3-TYPICAL REVERSE CHARACTERISTICS

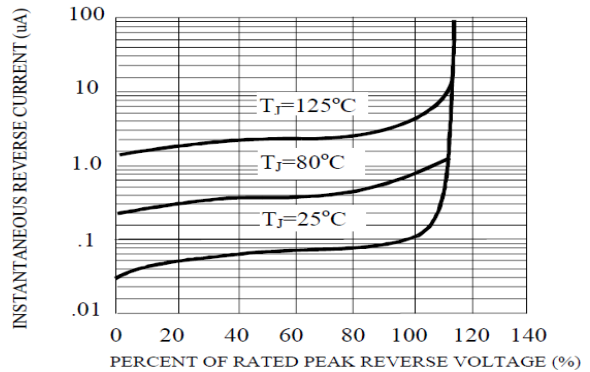


FIG. 4-TYPICAL INSTANTANEOUS FORWARD CHARACTERISTICS

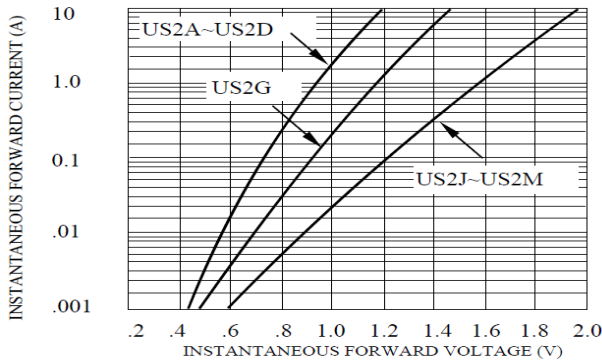
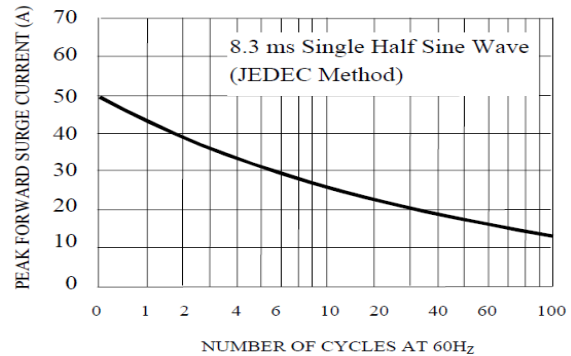


FIG. 5-MAXIMUM NON-REPETITIVE FORWARD SURGE CURRENT





US2A THRU US2M SPECIFICATIONS

Rev. A

FIG. 6-TYPICAL JUNCTION CAPACITANCE

