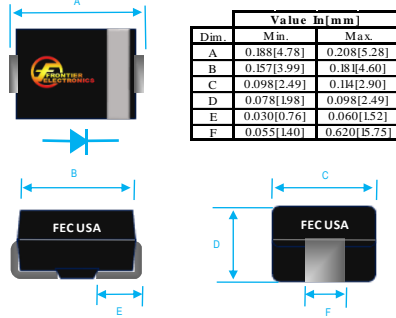


1A SURFACE MOUNT FAST RECOVERY RECTIFIERS

 <table border="1" style="margin-left: auto; margin-right: auto;"> <thead> <tr> <th rowspan="2">Dim.</th> <th colspan="2">Value In [mm]</th> </tr> <tr> <th>Min.</th> <th>Max.</th> </tr> </thead> <tbody> <tr> <td>A</td> <td>0.188[4.78]</td> <td>0.208[5.28]</td> </tr> <tr> <td>B</td> <td>0.187[3.99]</td> <td>0.18[4.60]</td> </tr> <tr> <td>C</td> <td>0.098[2.49]</td> <td>0.1[2.90]</td> </tr> <tr> <td>D</td> <td>0.078[1.98]</td> <td>0.098[2.49]</td> </tr> <tr> <td>E</td> <td>0.030[0.76]</td> <td>0.060[1.52]</td> </tr> <tr> <td>F</td> <td>0.055[1.40]</td> <td>0.620[15.75]</td> </tr> </tbody> </table>	Dim.	Value In [mm]		Min.	Max.	A	0.188[4.78]	0.208[5.28]	B	0.187[3.99]	0.18[4.60]	C	0.098[2.49]	0.1[2.90]	D	0.078[1.98]	0.098[2.49]	E	0.030[0.76]	0.060[1.52]	F	0.055[1.40]	0.620[15.75]	<h3>PRODUCT FEATURES</h3> <ol style="list-style-type: none"> 1. FLAMMABILITY CLASSIFICATION: 94V-0 2. BUILT-IN STRAIN RELIEF 3. LOW PROFILE 4. FAST SWITCHING 5. CASE: MOLDED PLASTIC, DO-214AC (SMA) 6. DIMENSIONS IN INCHES AND (MILLIMETERS) 7. POLARITY: INDICATED BY CATHODE BAND 8. WEIGHT : 0.064 GRAMS 9. ROHS
Dim.		Value In [mm]																						
	Min.	Max.																						
A	0.188[4.78]	0.208[5.28]																						
B	0.187[3.99]	0.18[4.60]																						
C	0.098[2.49]	0.1[2.90]																						
D	0.078[1.98]	0.098[2.49]																						
E	0.030[0.76]	0.060[1.52]																						
F	0.055[1.40]	0.620[15.75]																						

MAXIMUM RATINGS AND ELECTRICAL CHARACTERISTICS RATINGS AT 25°C AMBIENT TEMPERATURE UNLESS OTHERWISE SPECIFIED STORAGE AND OPERATING TEMPERATURE RANGE -55°C TO + 150°C. SINGLE PHASE, HALF WAVE, 60 HZ, RESISTIVE OR INDUCTIVE LOAD. FOR CAPACITIVE LOAD, DERATE CURRENT BY 20%

RATINGS	SYMBOL	VALUE	UNITS
MAXIMUM AVERAGE FORWARD RECTIFIED CURRENT @ TL=90°C	IO	1	A
PEAK FWD SURGE CURRENT, 8.3ms HALF SINE-WAVE SUPERIMPOSED ON RATED LOAD	IFSM	30	A
TYPICAL JUNCTION CAPACITANCE(NOTE1)	CJ	15	pF
MAXIMUM FORWARD VOLTAGE	VF	1.2	V
MAXIMUM REVERSE CURRENT @ 25°C	IR	5	uA
MAXIMUM REVERSE RECOVERY TIME	TRR	150	nS

1. MEASURED @ 1.0 MHZ AND APPLIED REVERSE VOLTAGE OF 4.0 V
2. REVERSE RECOVERY TEST CONDITIONS: IF=0.5A, IR=1.0A, IRR=0.
3. MAXIMUM FORWARD VOLTAGE AT IO DC

PART NUMBER	MAX RECURRENT PK REV VOLTAGE VRRM (V)	MAX RMS VOLTAGE VRMS (V)	MAX DC BLOCKING VOLTAGE VDC (V)	MARKING
RS4933	50	35	50	RS33
RS4934	100	70	100	RS34
RS4935	200	140	200	RS35
RS4936	400	280	400	RS36
RS4937	600	420	600	RS37

RATING AND CHARACTERISTIC CURVES

FIG. 1-TEST CIRCUIT DIAGRAM AND REVERSE RECOVERY TIME CHARACTERISTIC

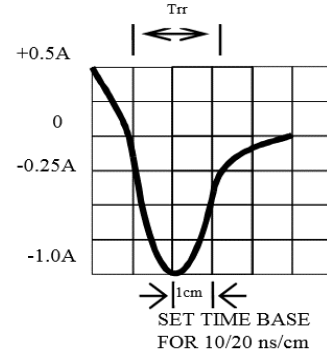
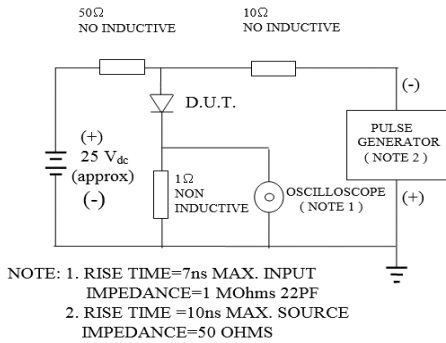


Fig. 2-MAXIMUM CURRENT DERATING CURVE

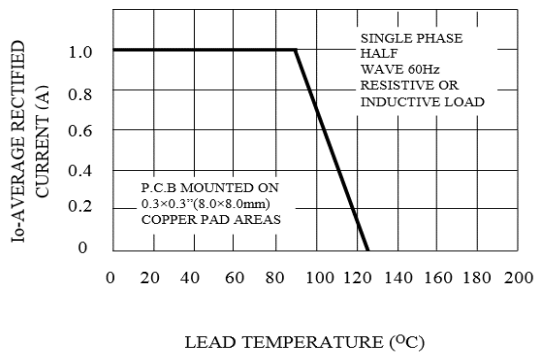


FIG. 3-TYPICAL JUNCTION CAPACITANCE

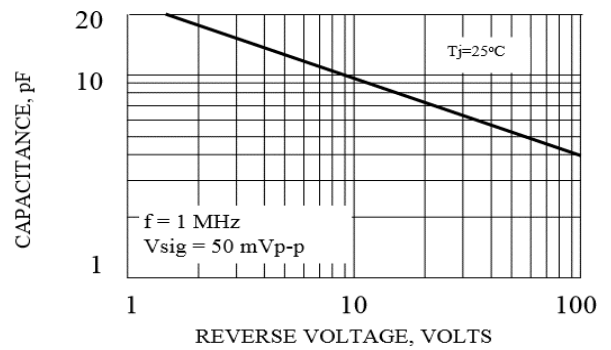


FIG. 4-TYPICAL REVERSE CHARACTERISTICS

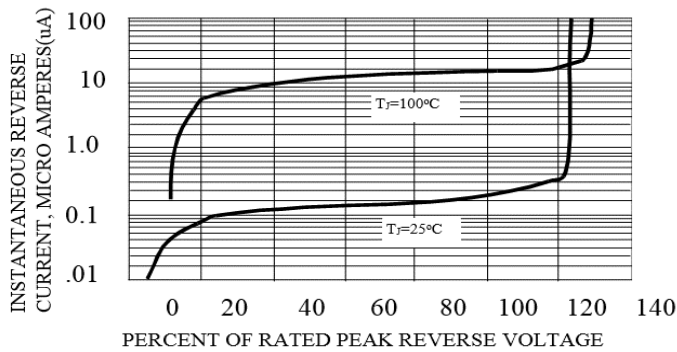
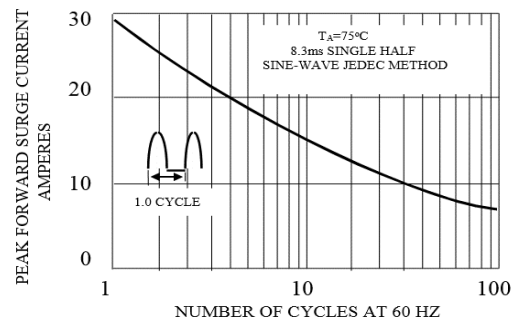


Fig. 5-MAXIMUM FORWARD SURGE CURRENT





RS4933 THRU RS4937 SPECIFICATIONS

Rev. A

