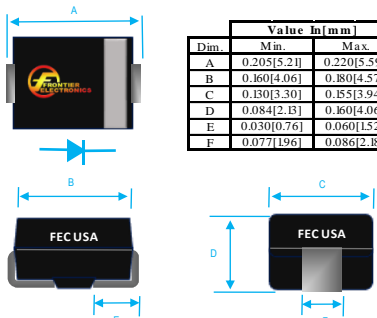


2A FAST RECOVERY SURFACE MOUNT RECTIFIER



| Dim. | Value In [mm] | |
|------|---------------|-------------|
| | Min. | Max. |
| A | 0.205[5.21] | 0.220[5.59] |
| B | 0.160[4.06] | 0.180[4.57] |
| C | 0.130[3.30] | 0.15[3.94] |
| D | 0.084[2.13] | 0.160[4.06] |
| E | 0.030[0.76] | 0.060[1.52] |
| F | 0.077[1.96] | 0.086[2.18] |

PRODUCT FEATURES

1. FLAMMABILITY CLASSIFICATION: 94V-0
2. GLASS PASSIVATED CHIP JUNCTION
3. BUILT-IN STRAIN RELIEF
4. LOW PROFILE
5. FAST SWITCHING
6. CASE: MOLDED PLASTIC BODY, DO-214AA (SMB)
7. DIMENSIONS IN INCHES AND (MILLIMETERS)
8. POLARITY: INDICATED BY CATHODE BAND
9. WEIGHT : 0.093 GRAMS
10. ROHS

MAXIMUM RATINGS AND ELECTRICAL CHARACTERISTICS RATINGS AT 25°C AMBIENT TEMPERATURE UNLESS OTHERWISE SPECIFIED STORAGE AND OPERATING TEMPERATURE RANGE -55°C TO + 150°C. SINGLE PHASE, HALF WAVE, 60 HZ, RESISTIVE OR INDUCTIVE LOAD. FOR CAPACITIVE LOAD, DERATE CURRENT BY 20%

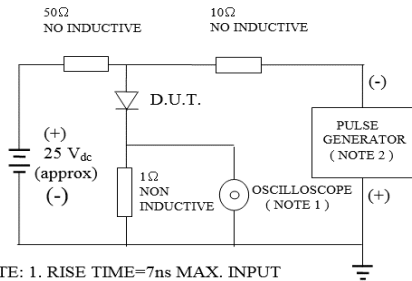
| RATINGS | SYMBOL | VALUE | UNITS |
|---|--------|-------|-------|
| MAXIMUM AVERAGE FORWARD RECTIFIED CURRENT @ TL=90°C | IO | 2 | A |
| PEAK FWD SURGE CURRENT, 8.3ms HALF SINE-WAVE SUPERIMPOSED ON RATED LOAD | IFSM | 70 | A |
| TYPICAL JUNCTION CAPACITANCE(NOTE 1) | CJ | 40 | pF |
| TYPICAL THERMAL RESISTANCE (NOTE 2) | Rqja | 18 | °C/W |
| MAXIMUM FORWARD VOLTAGE | VF | 1.3 | V |
| MAXIMUM REVERSE CURRENT @ 25°C | IR | 5 | uA |

1. MEASURED @ 1.0 MHZ AND APPLIED REVERSE VOLTAGE OF 4.0 V
2. THERMAL RESISTANCE FROM JUNCTION TO LEAD P.C.B. MOUNTED ON 0.3x0.3"(8.0x8.0mm) COPPER PAD AREAS
3. REVERSE RECOVERY TEST CONDITIONS: IF=0.5A, IR=1.0A, IRR=0.
4. MAXIMUM FORWARD VOLTAGE AT IO DC

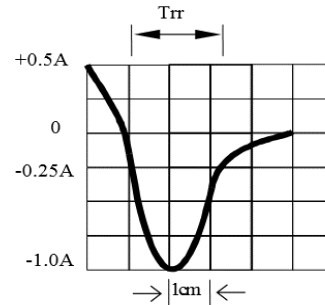
| PART NUMBER | MAX RECURRENT PK REV VOLTAGE VRRM (V) | MAX RMS VOLTAGE VRMS (V) | MAX DC BLOCKING VOLTAGE VDC (V) | MARKING | MAX REV RECOVERY TIME TRR (nS) |
|-------------|---------------------------------------|--------------------------|---------------------------------|---------|--------------------------------|
| RS2A | 50 | 35 | 50 | RS2A | 150 |
| RS2B | 100 | 70 | 100 | RS2B | 150 |
| RS2D | 200 | 140 | 200 | RS2D | 150 |
| RS2G | 400 | 280 | 400 | RS2G | 150 |
| RS2J | 600 | 420 | 600 | RS2J | 250 |
| RS2K | 800 | 560 | 800 | RS2K | 500 |
| RS2M | 1000 | 700 | 1000 | RS2M | 500 |

RATING AND CHARACTERISTIC CURVES

FIG. 1-TEST CIRCUIT DIAGRAM AND REVERSE RECOVERY TIME CHARACTERISTIC



NOTE: 1. RISE TIME=7ns MAX. INPUT IMPEDANCE=1 MOhms 22PF
 2. RISE TIME =10ns MAX. SOURCE IMPEDANCE=50 OHMS



SET TIME BASE FOR 10/20 ns/cm

Fig. 2-MAXIMUM FORWARD CURRENT DERATING CURVE

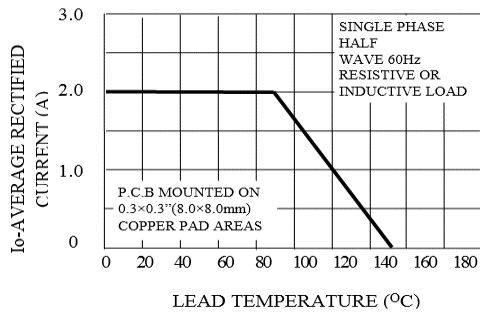


FIG. 3-TYPICAL REVERSE CHARACTERISTICS

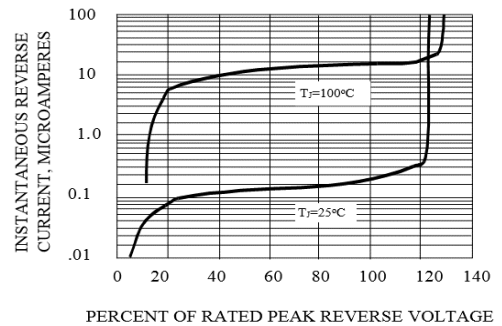


Fig. 4-MAXIMUM FORWARD SURGE CURRENT

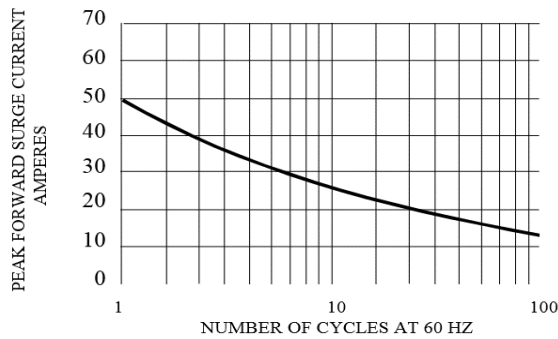
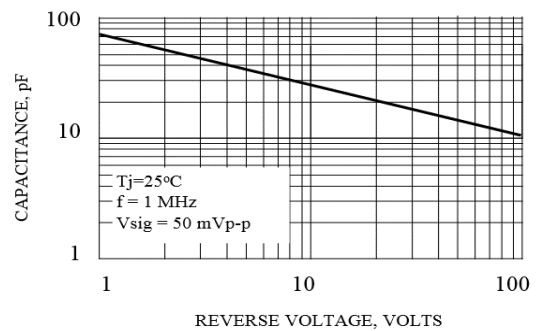


FIG. 5-TYPICAL JUNCTION CAPACITANCE





RS2A THRU RS2M SPECIFICATIONS

Rev. A

