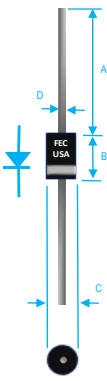


1.5A FAST RECOVERY PLASTIC RECTIFIER



Dim.	Value In (mm)	
	Min.	Max.
A	1.000[25.40]	—
B	0.230[5.84]	0.300[7.62]
C	0.104[2.64]	0.140[3.56]
D	0.028[0.71]	0.034[0.86]

PRODUCT FEATURES

1. FLAMMABILITY CLASSIFICATION: 94V-0
2. DIFFUSED JUNCTION
3. HIGH SURGE CURRENT CAPABILITY
4. CASE: TRANSFER MOLDED, DO15
5. DIMENSIONS IN INCHES AND (MILLIMETERS)
6. POLARITY: INDICATED BY CATHODE BAND
7. WEIGHT : 0.4 GRAMS
8. TERMINALS : PER MIL-STD-202, METHOD 208
9. ROHS

MAXIMUM RATINGS AND ELECTRICAL CHARACTERISTICS RATINGS AT 25°C AMBIENT TEMPERATURE UNLESS OTHERWISE SPECIFIED STORAGE AND OPERATING TEMPERATURE RANGE -55°C TO + 150°C. SINGLE PHASE, HALF WAVE, 60 HZ, RESISTIVE OR INDUCTIVE LOAD. FOR CAPACITIVE LOAD, DERATE CURRENT BY 20%

RATINGS	SYMBOL	VALUE	UNITS
MAXIMUM AVERAGE FORWARD RECTIFIED CURRENT 0.375"(9.5mm) LEAD LENGTH @ 55°C	IO	1.5	A
PEAK FWD SURGE CURRENT, 8.3ms HALF SINE-WAVE SUPERIMPOSED ON RATED LOAD	IFSM	60	A
TYPICAL JUNCTION CAPACITANCE(NOTE 1)	CJ	10	pF
TYPICAL THERMAL RESISTANCE (NOTE 2)	Rqja	40	°C/W
MAXIMUM FORWARD VOLTAGE	VF	1.6	V
MAXIMUM REVERSE CURRENT @ 25°C	IR	5	uA
MAXIMUM REVERSE CURRENT @ 100°C	IR	50	uA

1. MEASURED @ 1 MHZ AND APPLIED REVERSE VOLTAGE OF 4.0 VOLTS
2. BOTH LEADS ATTACHED TO HEAT SINK 20x20x1t(mm) COPPER PLATE @ LEAD LENGTH 5mm
3. MAXIMUM FORWARD VOLTAGE AT Io DC

PART NUMBER	MAX RECURRENT PK REV VOLTAGE VRRM (V)	MAX RMS VOLTAGE VRMS (V)	MAX DC BLOCKING VOLTAGE VDC (V)	MAX REV RECOVERY TIME TRR (nS)
BYV95AP	200	140	200	150
BYV95BP	400	280	400	150
BYV95CP	600	420	600	250
BYV96DP	800	560	800	300
BYV96EP	1000	700	1000	300

RATING AND CHARACTERISTIC CURVES

FIG. 1-TEST CIRCUIT DIAGRAM AND REVERSE RECOVERY TIME CHARACTERISTIC

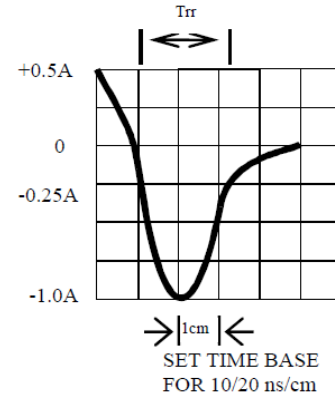
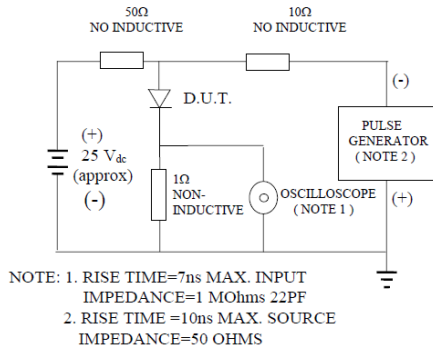


Fig. 2-MAXIMUM CURRENT DERATING CURVE

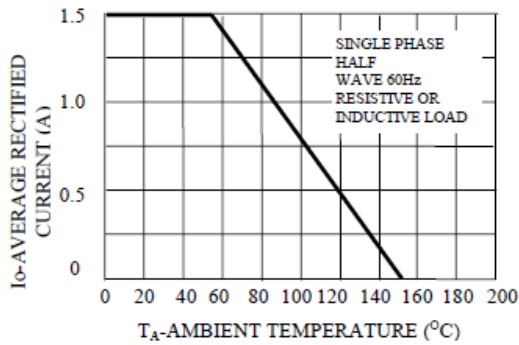


FIG. 3-TYPICAL REVERSE CHARACTERISTICS

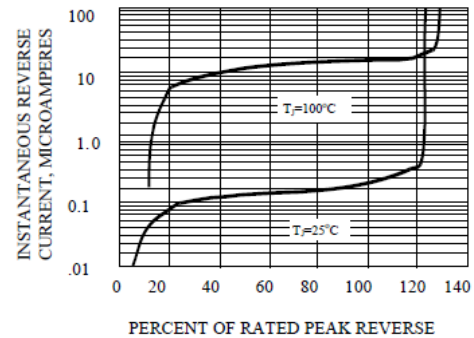


Fig. 4-MAXIMUM NON-REPETITIVE PEAK FORWARD SURGE CURRENT

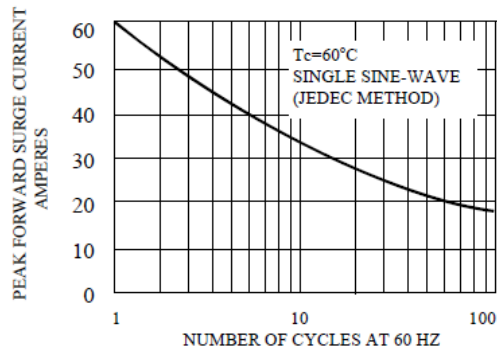
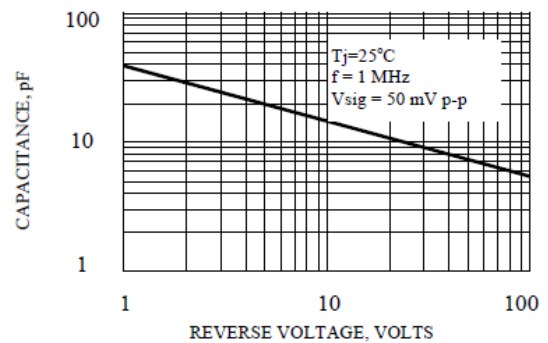


FIG. 5-TYPICAL JUNCTION CAPACITANCE





BYV95AP THRU BYV96EP SPECIFICATIONS

Rev. A

FIG. 6-TYPICAL INSTANTANEOUS FORWARD CHARACTERISTICS

