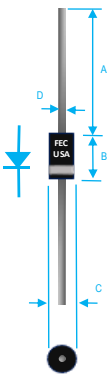


1A FAST RECOVERY GLASS PASSIVATED RECTIFIER



| Dim. | Value In(mm) | |
|------|--------------|-------------|
| | Min. | Max. |
| A | 1.000[25.40] | → |
| B | 0.166[4.23] | 0.205[5.21] |
| C | 0.080[2.03] | 0.107[2.72] |
| D | 0.028[0.71] | 0.034[0.86] |

PRODUCT FEATURES

1. FLAMMABILITY CLASSIFICATION: 94V-0
2. GLASS PASSIVATED CHIP JUNCTION
3. 1 A OPERATION @ 55°C WITH NO THERMAL RUNAWAY
4. FAST SWITCHING FOR HIGH EFFICIENCY
5. EXCEEDS MIL-STD-19500
6. CASE: JEDEC DO-41, MOLDED CASE
7. DIMENSIONS IN INCHES AND (MILLIMETERS)
8. POLARITY: INDICATED BY CATHODE BAND
9. WEIGHT : 0.34 GRAMS
10. TERMINALS : PER MIL-STD-202, METHOD 208
11. PULLING TEST: 2.3 KG
12. ROHS

MAXIMUM RATINGS AND ELECTRICAL CHARACTERISTICS RATINGS AT 25°C AMBIENT TEMPERATURE UNLESS OTHERWISE SPECIFIED STORAGE AND OPERATING TEMPERATURE RANGE -55°C TO + 150°C. SINGLE PHASE, HALF WAVE, 60 HZ, RESISTIVE OR INDUCTIVE LOAD. FOR CAPACITIVE LOAD, DERATE CURRENT BY 20%

| RATINGS | SYMBOL | VALUE | UNITS |
|--|--------|-------|-------|
| MAXIMUM AVERAGE FORWARD RECTIFIED CURRENT 0.375"(9.5mm) LEAD LENGTH @ 55°C | IO | 1 | A |
| PEAK FWD SURGE CURRENT, 8.3ms HALF SINE-WAVE SUPERIMPOSED ON RATED LOAD | IFSM | 30 | A |
| TYPICAL JUNCTION CAPACITANCE(NOTE 1) | CJ | 15 | pF |
| TYPICAL THERMAL RESISTANCE (NOTE 2) | Rqja | 50 | °C/W |
| MAXIMUM FORWARD VOLTAGE | VF | 1.2 | V |
| MAXIMUM REVERSE CURRENT @ 25°C | IR | 5 | uA |
| MAXIMUM REVERSE CURRENT @ 100°C | IR | 50 | uA |
| MAXIMUM REVERSE RECOVERY TIME | TRR | 120 | nS |

1. MEASURED @ 1 MHZ AND APPLIED REVERSE VOLTAGE OF 4.0 VOLTS
2. BOTH LEADS ATTACHED TO HEAT SINK 20x20x1t (mm) COPPER PLATE @ LEAD LENGTH 5mm
3. MAXIMUM FORWARD VOLTAGE AT IO DC

| PART NUMBER | MAX RECURRENT PK REV VOLTAGE VRRM (V) | MAX RMS VOLTAGE VRMS (V) | MAX DC BLOCKING VOLTAGE VDC (V) |
|-------------|---------------------------------------|--------------------------|---------------------------------|
| 1N4933G | 50 | 35 | 50 |
| 1N4934G | 100 | 70 | 100 |
| 1N4935G | 200 | 140 | 200 |
| 1N4936G | 400 | 280 | 400 |
| 1N4937G | 600 | 420 | 600 |

RATING AND CHARACTERISTIC CURVES

FIG. 1-TEST CIRCUIT DIAGRAM AND REVERSE RECOVERY TIME CHARACTERISTIC

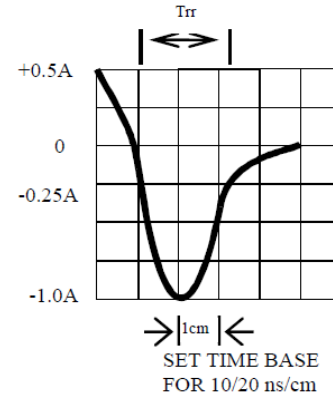
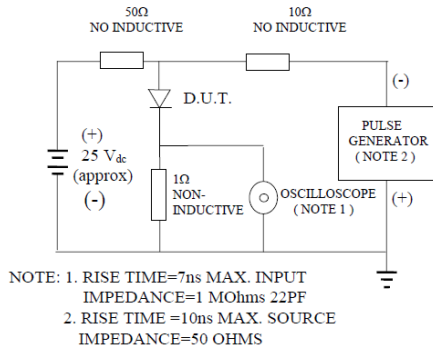


Fig. 2-MAXIMUM FORWARD CURRENT DERATING CURVE

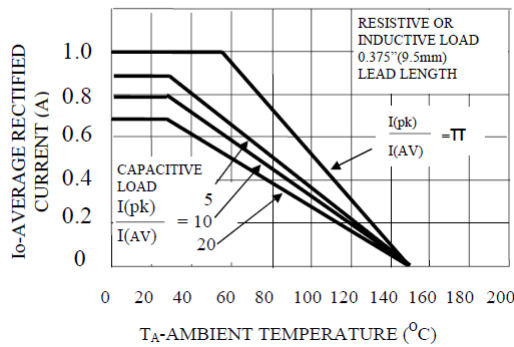


FIG. 3-TYPICAL JUNCTION CAPACITANCE

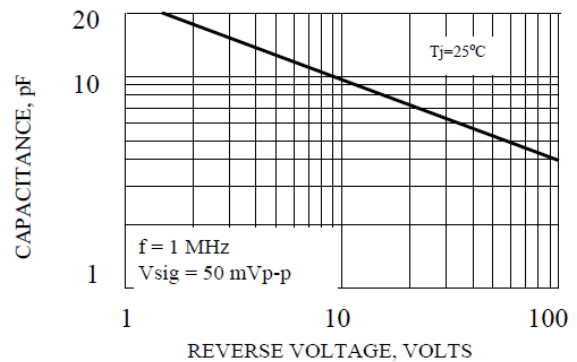


FIG. 4-TYPICAL REVERSE CHARACTERISTICS

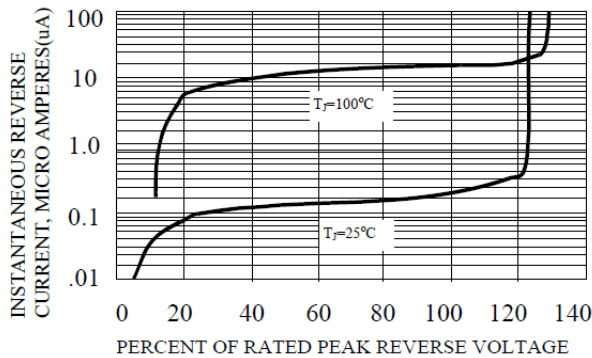
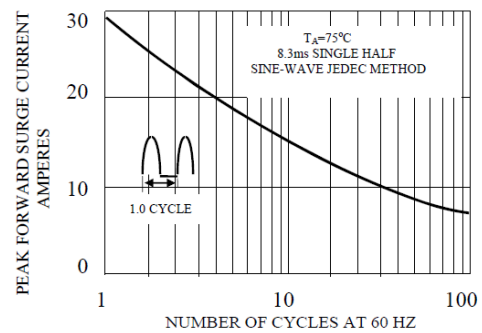


Fig. 5-MAXIMUM FORWARD SURGE CURRENT





1N4933G THRU 1N4937G SPECIFICATIONS

Rev. A

